



# DuraMill *RAPID*

- ✓ Water-cooled Industrial Spindle
- ✓ Open System and Various CAM Software Options
- ✓ Embrasure Milling

[erkdigital.com.tr](http://erkdigital.com.tr)



brochure



# DuraMill RAPID



## Dimensions (mm)

630 x 730 x 700



## Weight (kg)

197



## Controller Unit

Integrated PC



## Axes Motors

AC Servo Motor



## Spindle

Single Spindle, 1.2 KW, 60.000 RPM



## Cutting Tools

8 Tools



## Processing Method

Dry Milling



## Axis Information

5 Axis

## Open System, Various CAM Software Options

DuraMill Rapid can be suited with various CAM software. This would enable you work efficiently with the CAM software of your preference or familiarity, within your existing workflow.

## Water-cooled Industrial Spindle

The strong spindle with water cooling in DuraMill Rapid has a much higher efficiency than its competitors and it can carry your workload with ease.

## Material Options



### PEEK Disc

Ø 98mm Disc



### PMMA Disc

Ø 98mm Disc



### Zirconia Disc

Ø 98mm Disc

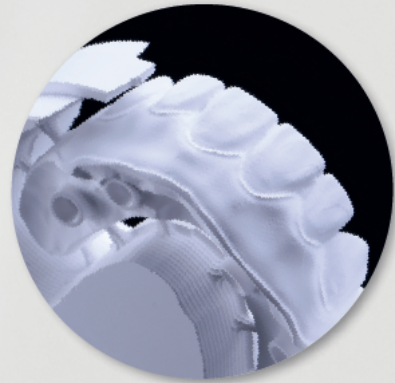


### Wax Disc

Ø 98mm Disc



9 Tuna Mahallesi Sanat Caddesi No:17/211 Selçuklu İş Merk.  
Bornova 35090 İzmir / TÜRKİYE ☎+90 232 335 12 69



## Embrasure Milling

With DuraMill Rapid's disc holder, in conformity with recent requirements, you can make embrasure milling up to your choice and be able to provide your dentists with more esthetic, detailed and quality restorations.